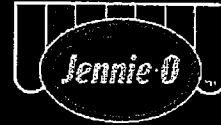


Jennie-O Turkey Store Products are classified as "Buy American", meaning that the products are processed in the United States and over 51% of the cost of all components of the end item are domestic in origin as defined by the Buy American Act.

PRE-COOKED SAVORY TURKEY MEATBALLS, .65 OZ.



Commodity Code: A-534/100124

6399-30

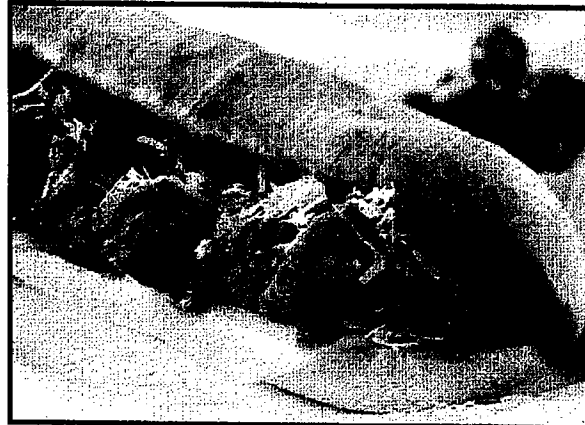
PRODUCT INFORMATION

Product Features

- Fully cooked IQF meatball
- One meatball is a .5 oz. mt./mt. alt. serving
- Pre-seasoned savory flavor
- 6/5 lb. poly bags
- Utilizes both white and dark meat

Product Attributes

- Great for Pasta or Meatball Sandwiches
- Nutritious Alternative to Traditional Meatballs
- Use Four Meatballs to Meet 2 oz. mt./mt. alt.



LIST OF INGREDIENTS:

TURKEY, MECHANICALLY SEPARATED TURKEY, WATER, BREAD CRUMBS (ENRICHED BLEACHED WHEAT FLOUR (NIACIN, REDUCED IRON, THIAMINE MONONITRATE, RIBOFLAVIN, FOLIC ACID), SALT, DURUM FLOUR, SOYBEAN OIL SHORTENING, LEAVENING (SODIUM BICARBONATE, SODIUM ACID PYROPHOSPHATE, MONOCALCIUM PHOSPHATE), DEXTROSE, YEAST, SPICE EXTRACTIVE), CONTAINS 2% OR LESS OF SEASONING (YEAST EXTRACT, SUGAR, DEXTROSE, ONION POWDER, GARLIC POWDER, SPICE, DISODIUM INOSINATE AND DISODIUM GUANYLATE), SALT, SUGAR, FLAVORINGS, POTASSIUM CHLORIDE, NONFAT DRY MILK, DRIED WHOLE EGGS, HYDROLYZED SOY PROTEIN.

ALLERGENS: WHEAT, MILK, SOY & EGG. CONTAINS GLUTEN.

SPECIFICATIONS

Ship Container UPC: 10042222639931
Frozen Shelf Life: 240 days from pack date
Pallet Pattern: 7 x 9 = 63
Full Pallet:
Net Weight: 1,890.00 lbs.
Gross Weight: 1,988.91 lbs.
Tare Weight: 98.91 lbs.
Catch Weight? N

BASIC PREPARATION INSTRUCTIONS*

Keep product frozen at 0°F or below until ready to use. Defrost frozen product slowly and thoroughly in a refrigerator for 24 hours. Never defrost at room temperature. Upon completion of the thawing process, product should be used within 5 days. Open packages and use in a variety of applications.

*For preparation by a food preparation establishment only, according to the food code or equivalent.

MASTER DIMENSIONS

Case Dimensions: 20.0"L x 13.25"W x 8.0"H
Cubic Feet: 1.227
Net Weight: 30.00 lbs.
Gross Weight: 31.57 lbs.
Tare Weight: 1.57 lbs.
Pack: 6/5 lbs.
Servings Per Case: 184

I certify that the above information is true and correct, and that a 2.60 ounce serving of the above product (ready for serving) contains 2.0 ounces of cooked lean meat/meat alternate when prepared according to directions.

I further certify that any VPP used in this product is authorized as an alternate food in the Child Nutrition Programs and its use conforms to Food and Consumer Service Regulations (7CFR part S 210, 225 OR 226, Appendix A).

Michelle Heveron Signature Labeling & Nutrition Coordinator Title
 Michelle Heveron 7/1/13

NUTRITIONAL INFORMATION PER 1 OZ. MT./MT. ALTERNATE SERVING

Svg Size (oz.)	Calories (Kcal)	Total Fat (g)	Sat. Fat (g)	Trans Fat (g)	Cholest. (mg)	Sodium (mg)	Carbs (g)	Fiber (g)	Protein (g)	Vit. A (%)	Calcium (%)	Vit. C (%)	Iron (%)
2.60	110	5	1.5	0	45	370	4	0	13	0	2	2	4